



ACO Product Catalogue

ACO Industrial Drainage



ACO. The future of drainage.



The ACO system chain provides drainage solutions which meet the future needs of industries where hygiene is essential

In a food service environment, hot water, grease and organic waste must be counteracted by more complex and sophisticated drainage concepts. ACO achieves this with intelligent system solutions which optimise food safety, health and safety of employees and the protection of water. Every ACO product within the ACO system chain safely controls water as it passes along the chain to ensure it can be hygienically, economically and ecologically handled in a viable way.



collect:
Collect and remove



clean:
Pre-clean and process



hold:
Protect and attenuate



release:
Pump, discharge and reuse



ACO system chain
in action

Introduction

ACO slot channel portfolio

The ACO slot channel range covers channels for all common applications and all common floor types (concrete, tiles, resin or vinyl). Selecting a channel from the range is easy. The unique variability of the whole portfolio allows choosing the right channel according to all customers' needs.

Channel's length, depth and outlet position are just a few of the parameters which can be varied and, regardless of the variations specified, there is no impact on delivery lead times.

ACO slot channel ordering

The dimensions of the ACO slot channel can be easily specified in respect of project requirements. To specify the channel please use the Customization template (see page 109) which will help you to identify the information needed or contact our Sales/Technical department.

ACO slot channel customization

In addition all ACO slot channel can be designed with:

- Special outlet position
- Special depth
- Special slope
- Special slot channel width
- L-shape and T-shape layout
- Special side inlets

To request customised ACO slot channel, please contact our Sales/technical department.

ACO slot channel system overview

ACO slot channel - fixed height solution



ACO slot channel - telescopic solution



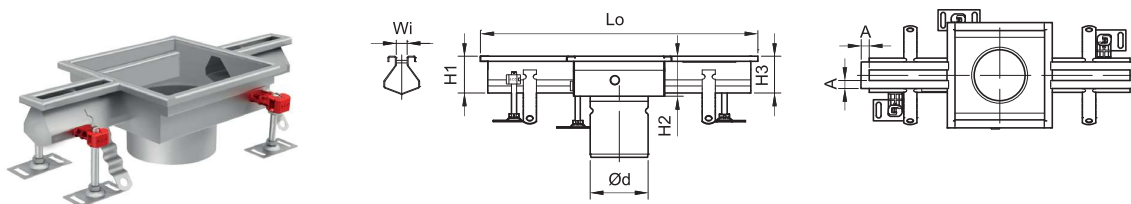
ACO slot channel - semi-standard

Product information

The dimensions of the ACO slot channel for concrete, tiles and resin floor can be easily specified in respect of project requirements.

- Tested and certified according to EN 1253
- Available in 1.4301 (304) or 1.4404 (316L) grades of stainless steel, pickled and passivated
- 1.5 mm material thickness
- ACO slot channel 8 or 20 mm
- Length – up to customer request
- Longitudinal slopes of the channel bottom 1-5 %
- Standardized widths
- Outlet position central or variable in longitudinal axis
- Adjustable EasyFix levelling feet
- Anchors for fixing in concrete
- Protective cover available.
See page 230 for more details

Order information



External (overall) width Wi [mm]	Dimension of edge A [mm]	Length of channel Lo	Height at outlet of channel H2	Height at end of channel H1 and H3
20	15	Variable *	50-200	50-200
8	folded		50-200	50-200

* The maximum transportable length of channel is 6 000 mm. Long channels over 6 000 mm are standardly divided in 6 m sections with transport joins.

ACO customized slot channel

Product information

The dimensions of the ACO customized slot channel for concrete, tiles and resin floor can be easily specified in respect of project requirements.

- Tested and certified according to EN 1253
- Available in 1.4301 (304) or 1.4404 (316L) grades of stainless steel, pickled and passivated
- 1.5 mm material thickness
- Slot of channel 8 or 20
- Length – up to customer request
- Longitudinal slopes of the channel bottom 1-5 %
- Outlet position central or variable in longitudinal axis
- Adjustable EasyFix levelling feet
- Anchors for fixing in concrete
- Protective covers available for gully tops. See page 230 for more details

Instructions

Please define channel dimensions by filling out required entry fields.

Step 1 - Material

Stainless steel grade 1.4301 (AISI 304)

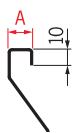
Stainless steel grade 1.4404 (AISI 316L)

Step 2 - Edge profiles



Detail of the Edge profile

Standard

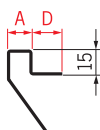


A	15	25
Rubber edge infill	<input type="checkbox"/>	<input type="checkbox"/>
Steel edge infill	<input type="checkbox"/>	<input type="checkbox"/>
No edge infill	<input type="checkbox"/>	<input type="checkbox"/>

Folded

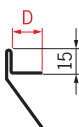


Extended



A	15	25
Rubber edge infill	<input type="checkbox"/>	<input type="checkbox"/>
Steel edge infill	<input type="checkbox"/>	<input type="checkbox"/>
No edge infill	<input type="checkbox"/>	<input type="checkbox"/>

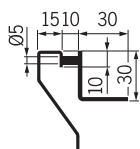
Folded with flange



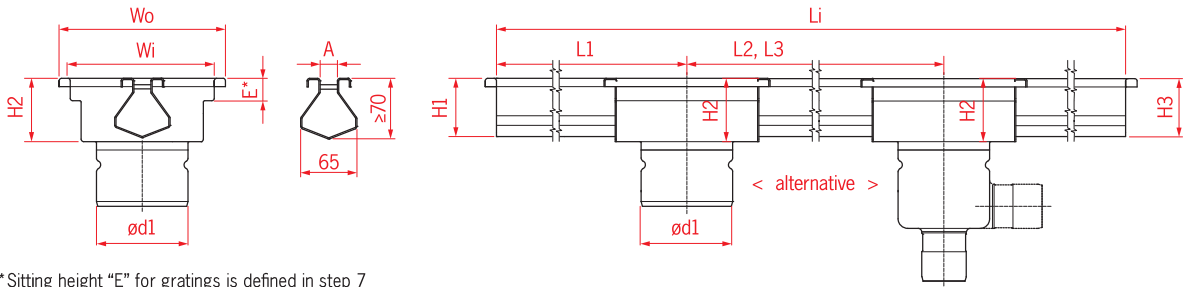
D	50	Custom
	<input type="checkbox"/>	<input type="checkbox"/>

D	50	Custom
	<input type="checkbox"/>	<input type="checkbox"/>

L profile



Step 3 - Channel dimensions



*Sitting height "E" for gratings is defined in step 7

Gully top dimension Wo	Channel outlet d1
200 x 200	75
200 x 200	110
200 x 200	125
250 x 250	142
300 x 300	200
Customized width	

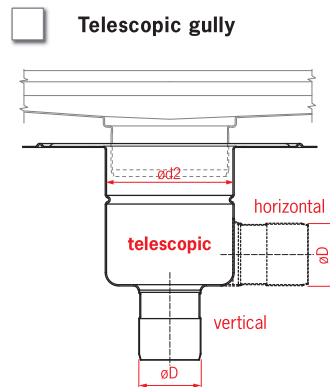
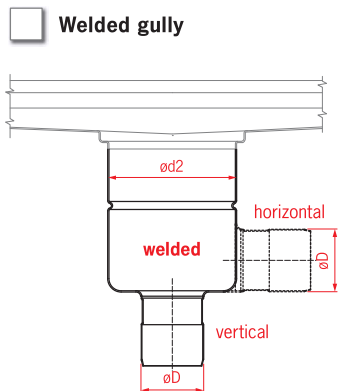
Channel bottom height	
	H2
Slope	
No	
Yes - slope 1%	
Yes - height defined (If you require values below 70 mm, please contact technical support)	
H1	
H3	

Channel lengths	
Li	
L1	
L2	
L3	

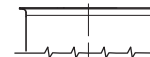
Slot dimension A	
8	
20	

ACO channel

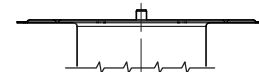
Step 4 - Gully



Location flange
(For telescopic gully only)



Bonding flange
(For telescopic gully only)



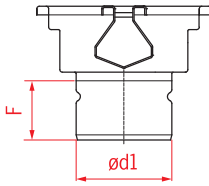
Clamping flange
(For telescopic gully only)



Vertical outlet	
Gully body diameter ød2	Outlet pipe diameter øD
142 (1.4 l/s)	75
142 (1.6 l/s)	110
157 (2.7 l/s)	75
157 (3.5 l/s)	110
218 (5.0 l/s)	110
218 (5.0 l/s)	160

Horizontal outlet	
Gully body diameter ød2	Outlet pipe diameter øD
142 (1.4 l/s)	75
142 (1.6 l/s)	110
157 (2.6 l/s)	75
157 (2.8 l/s)	110
218 (4.4 l/s)	110

Without gully (outlet pipe only)

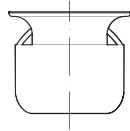


Channel outlet		
Outlet diameter		
Wo	$\varnothing d1$	<input type="checkbox"/>
200 x 200	75	<input type="checkbox"/>
200 x 200	110	<input type="checkbox"/>
200 x 200	125	<input type="checkbox"/>
250 x 250	142	<input type="checkbox"/>
300 x 300	200	<input type="checkbox"/>

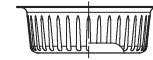
Outlet length	
F	<input type="checkbox"/>
36	<input type="checkbox"/>
58	<input type="checkbox"/>
150	<input type="checkbox"/>
Custom	<input type="checkbox"/>

Step 5 - Accessories

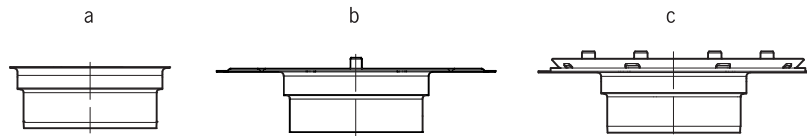
Foul air trap (FAT)	
With FAT	<input type="checkbox"/>
Without FAT	<input type="checkbox"/>



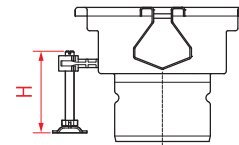
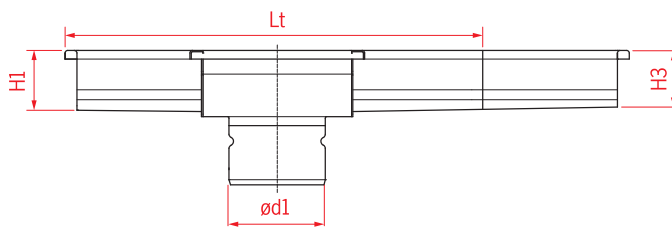
Silt basket	
With Silt basket	<input type="checkbox"/>
Without Silt basket	<input type="checkbox"/>



Raising piece	
Location flange (a)	<input type="checkbox"/>
Bonding flange (b)	<input type="checkbox"/>
Clamping flange (c)	<input type="checkbox"/>



Step 6 - Delivery requirements



Transport connection L_t	
6000 (standard)	<input type="checkbox"/>
3000	<input type="checkbox"/>
2000	<input type="checkbox"/>

ACO EasyFix levelling feet H	
80 (standard)	<input type="checkbox"/>
110	<input type="checkbox"/>
170	<input type="checkbox"/>
200	<input type="checkbox"/>

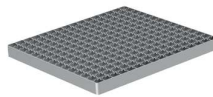
Step 7 - Gratings



ACO hygienic ladder grating	<input type="checkbox"/>
Slip resistant	<input type="checkbox"/>
Load class	
R 50 (valid up to $W_o = 300$)	<input type="checkbox"/>
M 125 (valid up to $W_o = 300$)	<input type="checkbox"/>
C 250 (valid up to $W_o = 300$)	<input type="checkbox"/>



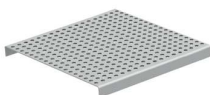
ACO hygienic cast grating	<input type="checkbox"/>
Slip resistant	<input type="checkbox"/>
Load class	
M 125 (valid up to $W_o = 300$)	<input type="checkbox"/>



ACO mesh grating	<input type="checkbox"/>
Slip resistant	<input type="checkbox"/>
Plain	<input type="checkbox"/>
Load class	
L 15 (valid up to $W_o = 300$)	<input type="checkbox"/>
R 50 (valid up to $W_o = 300$)	<input type="checkbox"/>



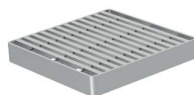
ACO slot cover	<input type="checkbox"/>
Load class	
M 125 (valid up to $W_o = 300$)	<input type="checkbox"/>



ACO perforated grating	<input type="checkbox"/>
Load class	
L 15 (valid up to $W_o = 300$)	<input type="checkbox"/>
R 50 (valid up to $W_o = 300$)	<input type="checkbox"/>



ACO multi-slot 5 grating	<input type="checkbox"/>
Load class	
L 15 (valid up to $W_o = 300$)	<input type="checkbox"/>
R 50 (valid up to $W_o = 300$)	<input type="checkbox"/>



ACO heelsafe grating	<input type="checkbox"/>
Load class	
L 15 (valid up to $W_o = 300$)	<input type="checkbox"/>

Without grating



Height of gratings E	
20	<input type="checkbox"/>
25	<input type="checkbox"/>
30	<input type="checkbox"/>
40	<input type="checkbox"/>

Step 8 - Protective covers

With protective covers (Only available for outlet units)
 For more information about protective covers, see page 230.)



Your specification/shape of the channel, outlet position

A large grid for drawing specifications, consisting of 30 columns and 30 rows of small squares. The grid is intended for users to draw or specify the shape and outlet position of a channel.

ACO modular slot channel 20 - standard articles

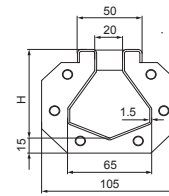
Product information

Ideal for wash-down applications or as a water break between designed wet and dry areas.

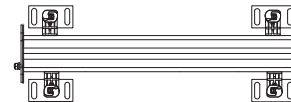
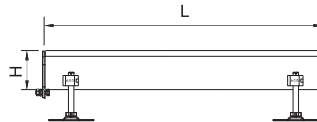
Modular concept allows specification of standard channel units to surround machinery and fit within existing tiling patterns.

Vee-bottomed (V) profiled channel for enhanced flow efficiency at low flow rates and for improved self cleaning performance.

- Fully compliant to EN 1253
- Fully tested and classified to EN 1433
- Available in 1.4301 (304) or 1.4404 (316L) grades of stainless steel, Fully pickled and passivated
- Wide range of gratings for load class up to C 250 (EN 1433)



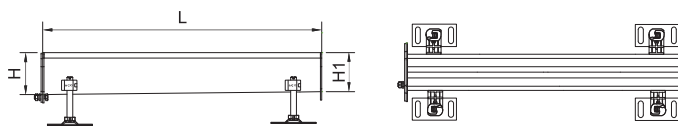
Level invert channel



L [mm]	Dimensions		Item number	
	H [mm]		1.4301	1.4404
500	70		92300	92350
	90		92301	92351
	120		92302	92352
1000	70		92305	92355
	90		92306	92356
	120		92307	92357
2000	70		92310	92360
	90		92311	92361
	120		92312	92362
3000	70		92316	92366
	90		92317	92367
	120		92318	92368

Note: Items are equipped with seal and connecting material on one side.

Sloping invert channel

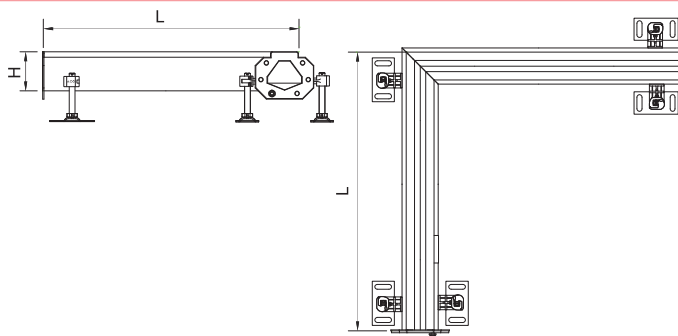


L [mm]	Dimensions		Item number	
	H1 [mm]	H2 [mm]	1.4301	1.4404
500	70	75	92303	92353
	75	80	92304	92354
1000	70	75	92308	92358
	75	80	92309	92359
2000	70	80	92313	92363
	80	90	92314	92364
	90	100	92315	92365
3000	70	80	92319	92369
	80	90	92320	92370
	90	100	92321	92371
	100	110	92322	92372
6000	110	120	92323	92373
	70	90	409014	409015
	90	110	409016	409017

Note: Items are equipped with seal and connecting material on deeper side only. See page 114 for more details.



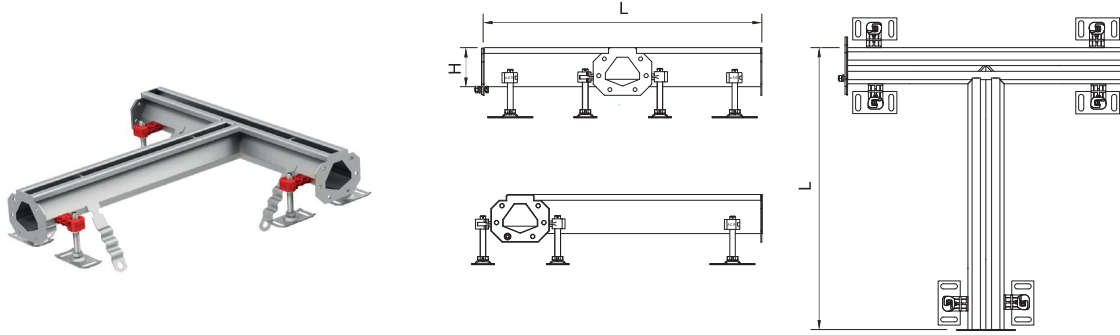
Corner unit



L [mm]	Dimensions		Item number	
	H [mm]	1.4301	1.4404	
500	70	92338	92388	
	75	92339	92389	
	80	92340	92390	
	90	92341	92391	
	100	92342	92392	
	110	92343	92393	
	120	92344	92394	

Note: Items are equipped with seal and connecting material on one side.

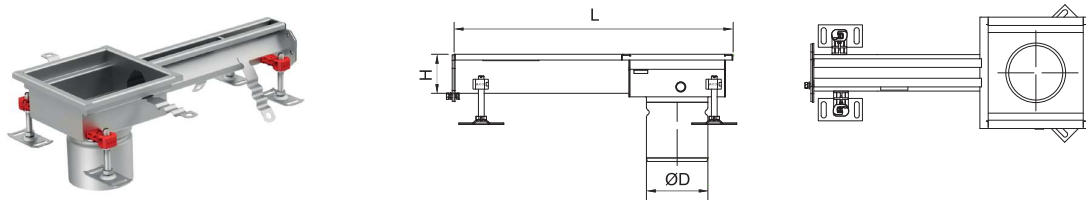
Branch unit



Dimensions		Item number	
L [mm]	H [mm]	1.4301	1.4404
500	70	92345	92395
	75	92346	92396
	80	92347	92397
	90	92348	92398
	100	92349	92399
	110	92400	92450
	120	92401	92451

Note: Items are equipped with seal and connecting material on one side.

End outlet

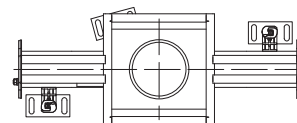
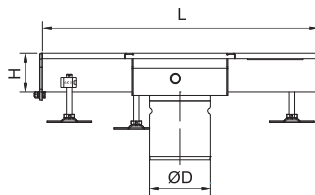


Dimensions		Gully	Gully top [mm]	Outlet diameter øD [mm]	Item number	
L [mm]	H [mm]				1.4301	1.4404
500	70	ACO gully EG150	200 x 200	110	414341	414348
	75				414342	414349
	80				414343	414350
	90				414344	414351
	100				414345	414352
	110				414346	414353
	120				414347	414354
	70	ACO hygienic gully 142	200 x 200	125	415925	415970
	75				415926	415971
	80				415927	415972
	90				415928	415973
	100				415929	415974
	110				415930	415975
	120				415931	415976
	70	ACO hygienic gully 157	250 x 250	142	414201	414208
	75				414202	414209
	80				414203	414210
	90				414204	414211
	100				414205	414212
	110				414206	414213
	120				414207	414214

Note: Items are equipped with seal and connecting material on one side.

ACO modular channel
ACO modular slot channel 20 - standard articles

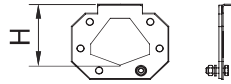
Centre outlet



Dimensions		Gully	Gully top [mm]	Outlet diameter øD [mm]	Item number	
L [mm]	H [mm]				1.4301	1.4404
500	70	ACO gully EG150	200 x 200	110	414355	414362
	75				414356	414363
	80				414357	414364
	90				414358	414365
	100				414359	414366
	110				414360	414367
	120				414361	414368
1000	70				414369	414376
	75				414370	414377
	80				414371	414378
	90				414372	414379
	100				414373	414380
	110				414374	414381
500	120				ACO hygienic gully 142	200 x 200
	70	415932	415977			
	75	415933	415978			
	80	415934	415979			
	90	415935	415980			
	100	415936	415981			
	110	415937	415982			
1000	120	415938	415983			
	70	415939	415984			
	75	415940	415985			
	80	415941	415986			
	90	415942	415987			
	100	415943	415988			
	110	415944	415989			
500	120	ACO hygienic gully 157	250 x 250	142	415945	415990
	70				414215	414222
	75				414216	414223
	80				414217	414224
	90				414218	414225
	100				414219	414226
	110				414220	414227
1000	120				414221	414228
	70				414229	414236
	75				414230	414237
	80				414231	414238
	90				414232	414239
	100				414233	414240
	110				414234	414241
120	414235	414242				

Note: Items are equipped with seal and connecting material on one side.

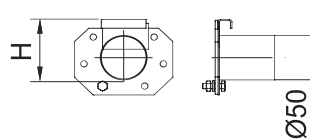
End plate



Dimensions H [mm]	Item number	
		1.4301
70	92324	92374
75	92325	92375
80	92326	92376
90	92327	92377
100	92328	92378
110	92329	92379
120	92330	92380

Note: Items are equipped with seal and connecting material.

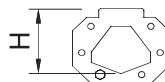
End plate with 50 mm outlet



Dimensions H [mm]	Item number	
		1.4301
70	92331	92381
75	92332	92382
80	92333	92383
90	92334	92384
100	92335	92385
110	92336	92386
120	92337	92387

Note: Items are equipped with seal and connecting material.

Seal rubber

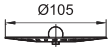
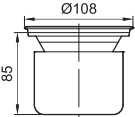
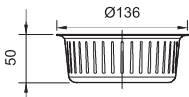
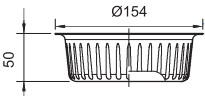


Dimensions H [mm]	Item number
	NBR
70	413601
75	413602
80	413603
90	413604
100	413605
110	413606
120	413607

Note: Items include seal and connecting material.

Accessories for ACO modular slot channel 20

ACO channel

	Description	Used with	Material	Item number
	Sieve ■ Stainless steel	■ ACO modular slot channel 20 with outlet 110 mm	1.4301	97235
			1.4404	97285
	Foul air trap ■ Stainless steel ■ Water seal 50 mm	■ ACO modular slot channel 20 with outlet 110 mm	1.4301	97217
			1.4404	97267
	Silt basket ■ Stainless steel ■ 0.5 litre capacity	■ ACO modular slot channel 20 with outlet 125 mm	1.4301	414339
			1.4404	414340
	Silt basket ■ Stainless steel ■ 0.6 litre capacity	■ ACO modular slot channel 20 with outlet 142 mm	1.4301	408202
			1.4404	408212